



advertendo®

ALL COMFORT IN ONE

GIACOMINI S.P.A.
VIA PER ALZO, 39
28017 SAN MAURIZIO D'OPAGLIO
NOVARA ITALY

EP0003  FEB2025

Learn all about
our systems.



Unique Home is the all-in-one solution for detached houses and independent units. Radiant heating and cooling, ventilation, hot domestic water become part of an integrated system ensuring maximum comfort, providing premium indoor air quality and guaranteeing energy savings.





Heat pumps

Heat pumps are sustainable heating and cooling solutions because they harness **renewable energy** from the air. Through the refrigeration cycle, they transfer heat from outside to inside in winter and, in reverse mode, expel it in summer, ensuring **high performance and low consumption**. With the dedicated hydronic module, it is possible to connect the thermal circuit to **hot domestic water production**.

Deaeration and filtration

To maintain the **efficiency of systems**, it is essential to remove air and impurities from water, which can cause corrosion and fouling on exchangers, pumps, and valves. Dedicated filtration and deaeration solutions **protect the circuit**, guaranteeing **long life** and **constant operation** of HVAC systems.

Distribution and regulation

Pump units and distribution manifolds allow to connect and regulate the **primary and secondary circuits in a balanced way**. These modular, pre-assembled solutions enable **rapid installation** and optimal thermal flow

management, ensuring even distribution of heating, cooling, and HDW to all areas of the house.

Radiant systems

Radiant systems, suitable for both **new constructions and renovations**, feature **low-thickness** preformed panels that can be installed on the floor, wall, or ceiling. Due to their **low thermal inertia**, they respond quickly to changes in temperature, helping to **improve energy efficiency, reducing costs**, and environmental impact.

Air treatment and HRVs

In high-efficiency buildings, air renewal is essential for living comfort. Dual-flow mechanical ventilation units provide **continuous air renewal** by combining filtration, heating, cooling, and dehumidification. **Integrated solutions**, such as dehumidifiers and fan coils, provide additional options for indoor climate control.

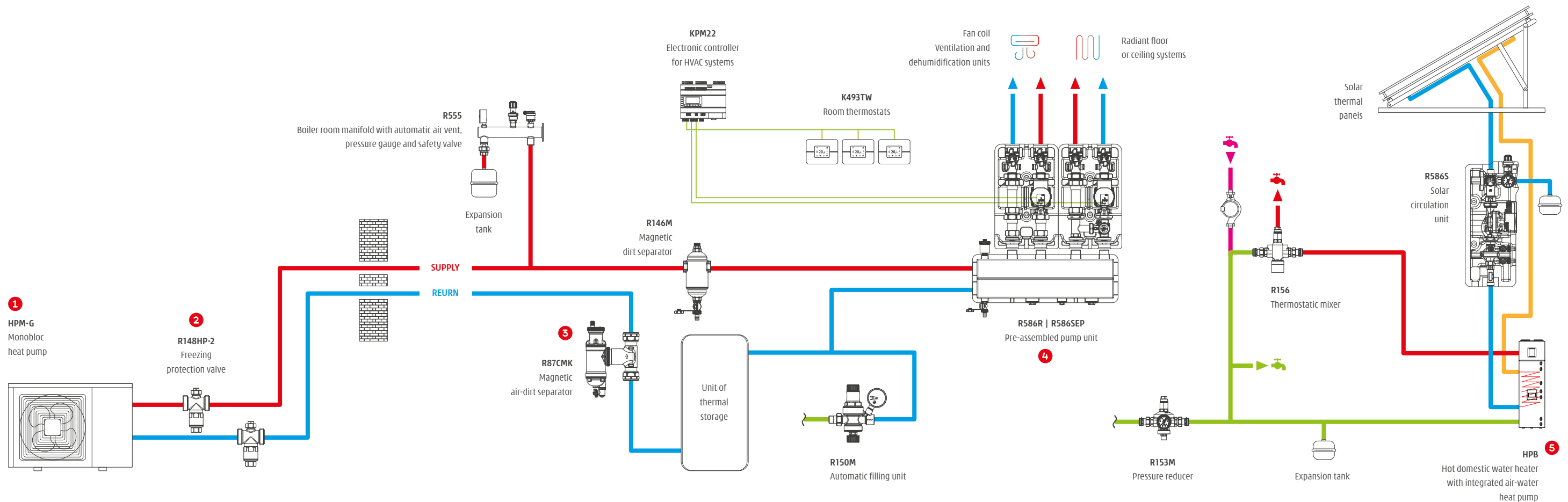
Hot domestic water production

Water heater with built-in air-to-water heat pump allow for sustainable HDW production, guaranteeing **low energy consumption** and **premium performance**.



Single family home / Portugal

**Unique Home by
Giacomini is the
"all-in-one" solution that
ensures convenience
and reliability for single
homes and
detached units.**



④ R586R | R586SEP



Pump units and boiler room manifolds

Insulated and pre-assembled pump units for managing heating and cooling in zoned systems. Available in DN25, DN32, or DN40 sizes, with or without a mixing valve and circulator. Option to reverse the supply and return connections.

Units are equipped with ball valves with

thermometers (range 0÷120 °C), a check valve integrated into the return pipe, insulation shell, and wall-mounting bracket.

Compatible with the R586SEP boiler room manifold, which can be used both as a manifold and a hydraulic separator.

- ⊕ Heating and cooling
- ⊕ Reversible supply
- ⊕ Hydraulic separator function

⑤ HPB



Hot domestic water heater with integrated air-water heat pump

Water heater with built-in air-to-water heat pump. This solution draws energy from the air, either from the room where it is installed or from the outside, depending on the installation type. By harnessing ambient air, the water heater efficiently heats domestic

water, ensuring significant energy savings. It also serves as an energy storage system, allowing the storage of a large amount of hot water ideally produced by clean energy sources (such as photovoltaic or solar thermal systems), thus reducing CO₂ emissions.

- ⊕ High efficiency
- ⊕ Stainless steel tank





Unique Home technical solution | hero products

① HPM-G



Monobloc heat pump

High-efficiency, reversible air-to-water monobloc heat pump for heating and cooling, functioning with low GWP eco-friendly R290 refrigerant. Equipped with a DC inverter compressor, brushless DC fans, and a DC circulator for optimal performance. Available in single-phase or three-phase power supply options.

- ⊕ Refrigerant gas with low GWP
- ⊕ High efficiency
- ⊕ Extremely quiet

formation. The valve automatically discharges the circuit fluid when the temperature drops to 2 °C.

- ⊕ Anti-freezing protection
- ⊕ Easy maintenance
- ⊕ Compact design

③ R87 series



Air and air-dirt separator (magnetic feature)

Air and air-dirt separator (magnetic feature), for continuous air and impurities removal in the hydraulic circuits of modern HVAC systems. Equipped with adjustable fitting suitable for installation on horizontal, vertical, inclined or 90° angled pipes.

- ⊕ High filtering capacity
- ⊕ Versatile installation
- ⊕ Magnetic option

② R148HP-2



Freezing protection valve

Freezing protection valve specifically designed for monobloc heat pump systems to prevent damage from ice



Unique Home: core and supporting systems

➤ Radiant floor and ceiling systems



KPM22
Electronic controller

Radiant floor
and walls



Radiant plasterboard
ceilings

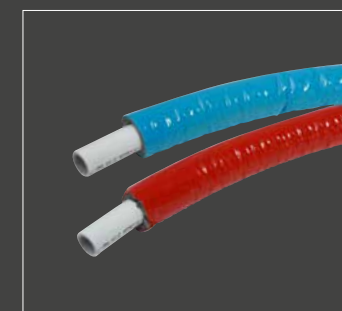
➤ Components for domestic water distribution



RM series
Multi-jaw press fittings



R585CS
Modular manifolds
for domestic water distribution



R999I
Multilayer pipe

➤ Air treatment for radiant systems and HRVs



KHRD-H
ERV unit with
dehumidification/integration



KHR-V
Duct-type dual-flow ventilation unit



KDP
Dehumidification

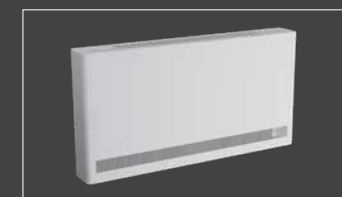
➤ Fan coil range



KFC-M
Multi-zone
ductable fan coil



KFC-WU
Fan coil for
wall-up
installation



KFC-WD
Fan coil for
wall-down
installation